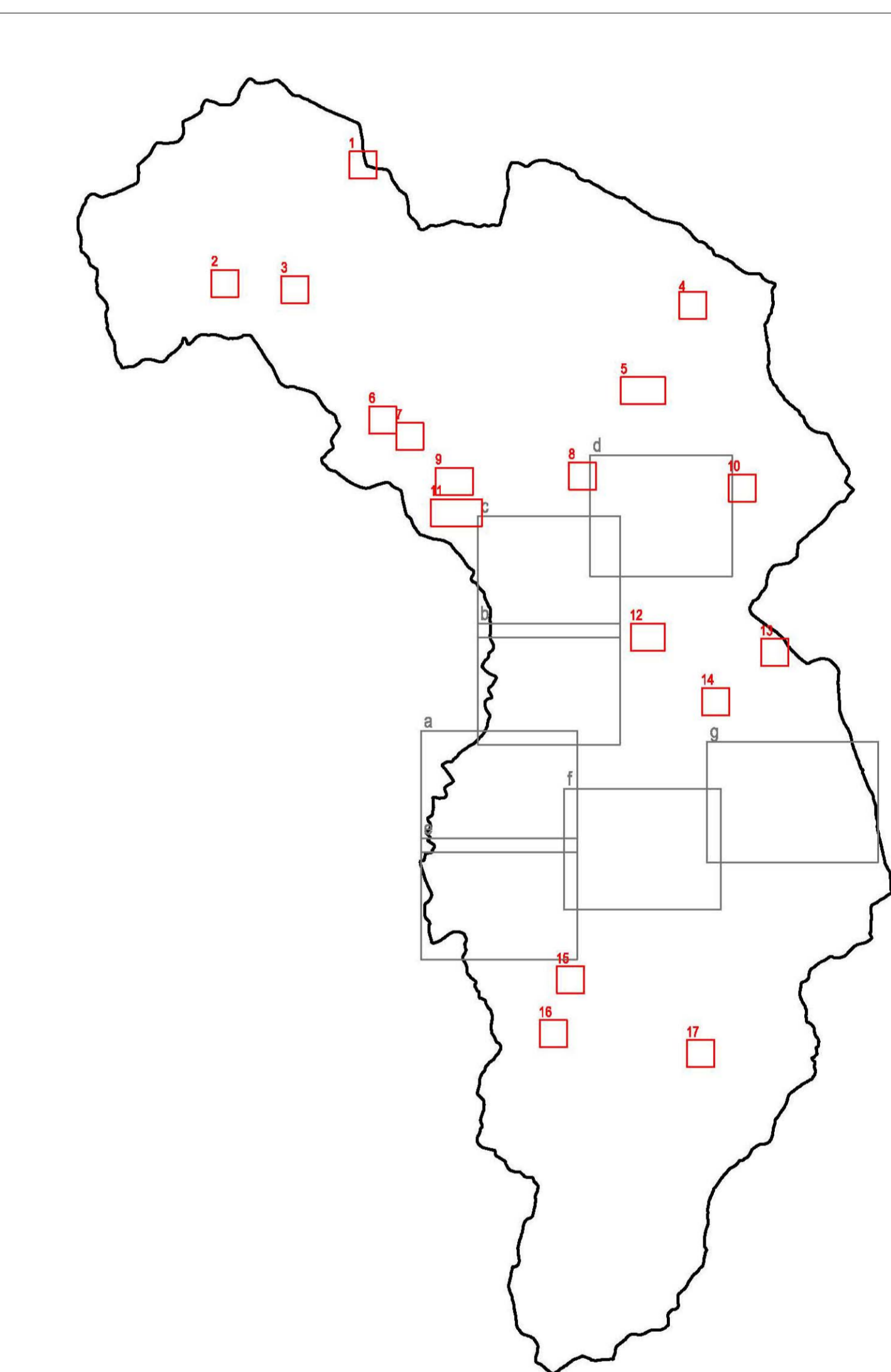
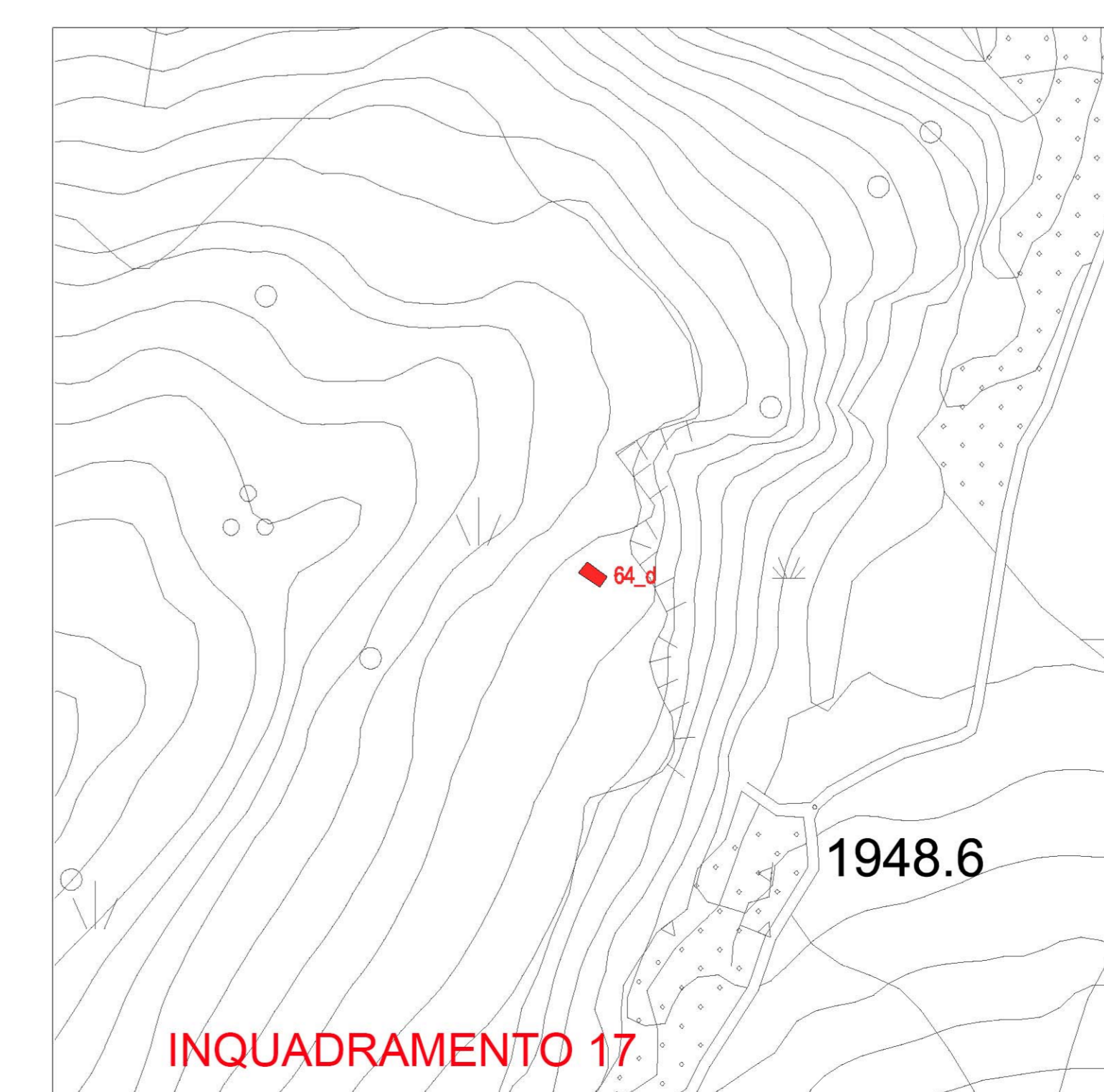
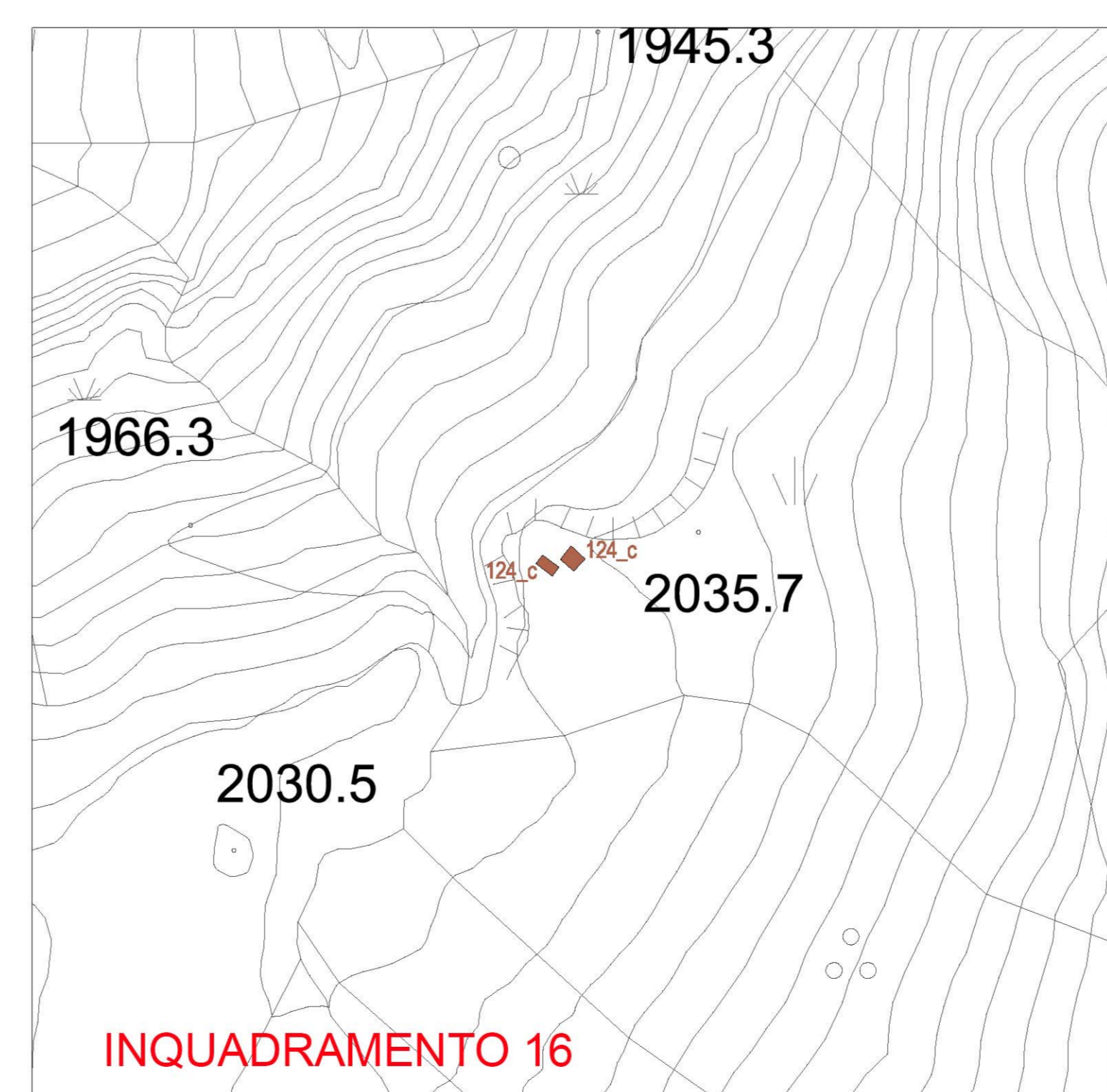
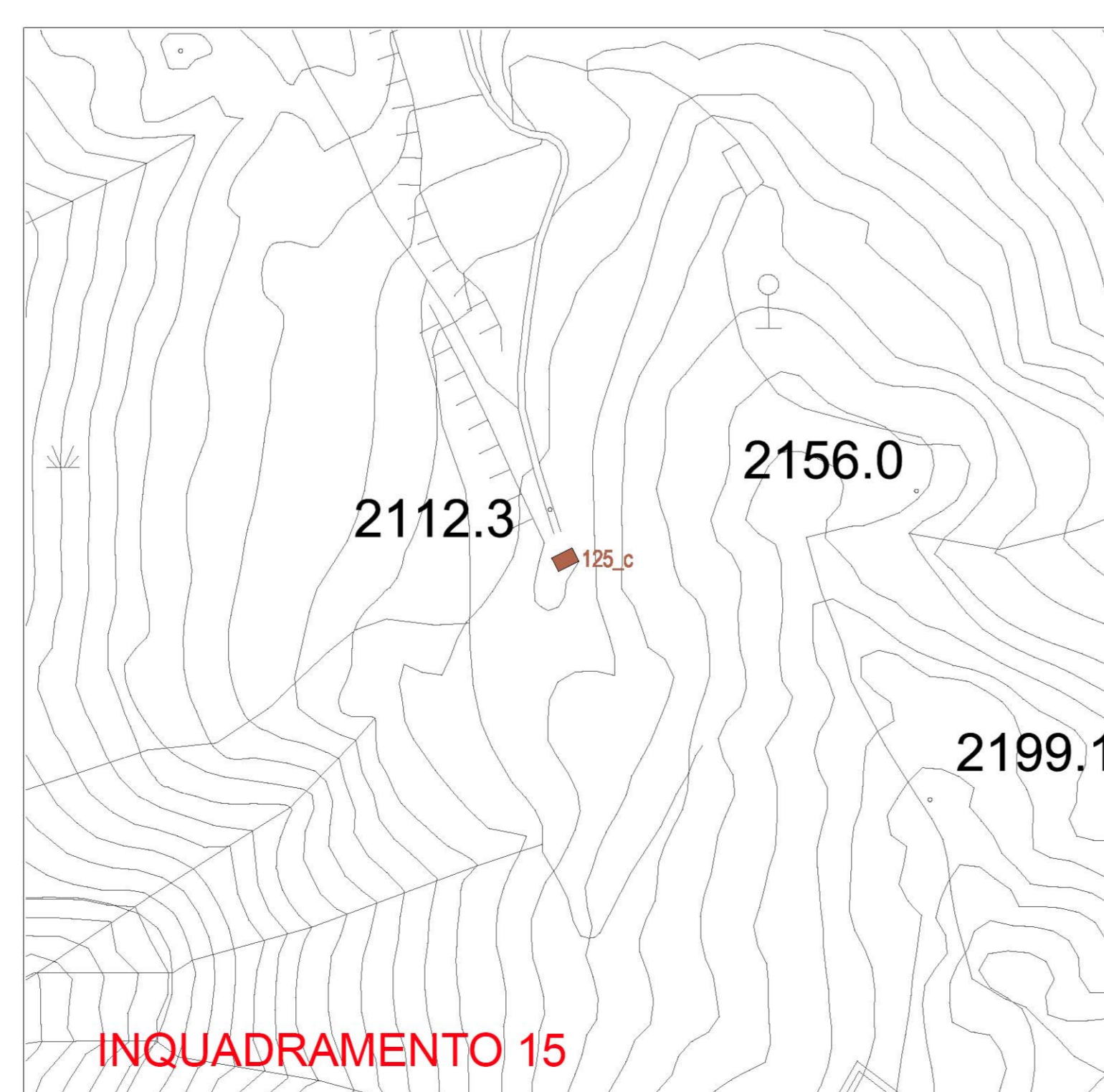
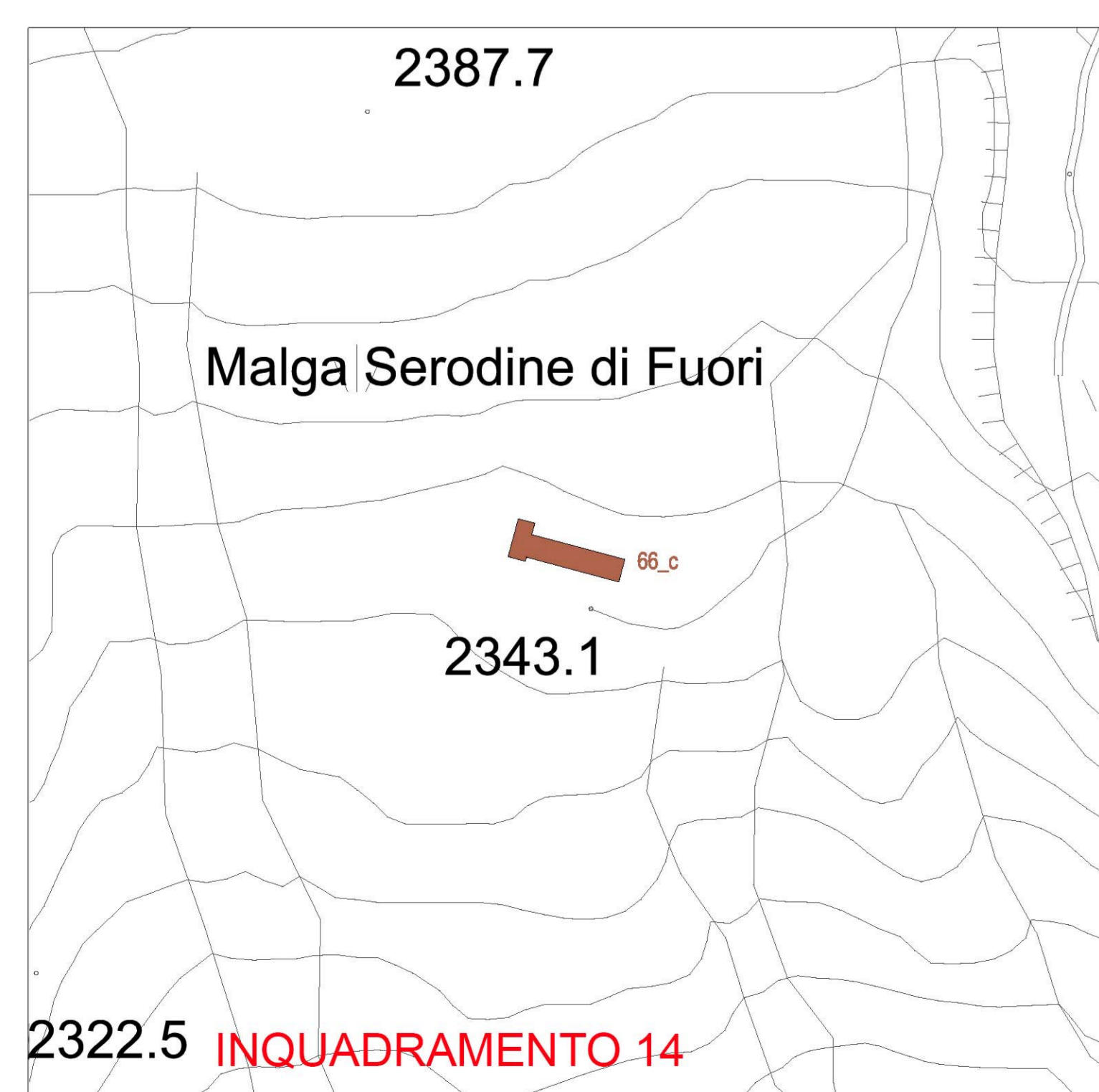
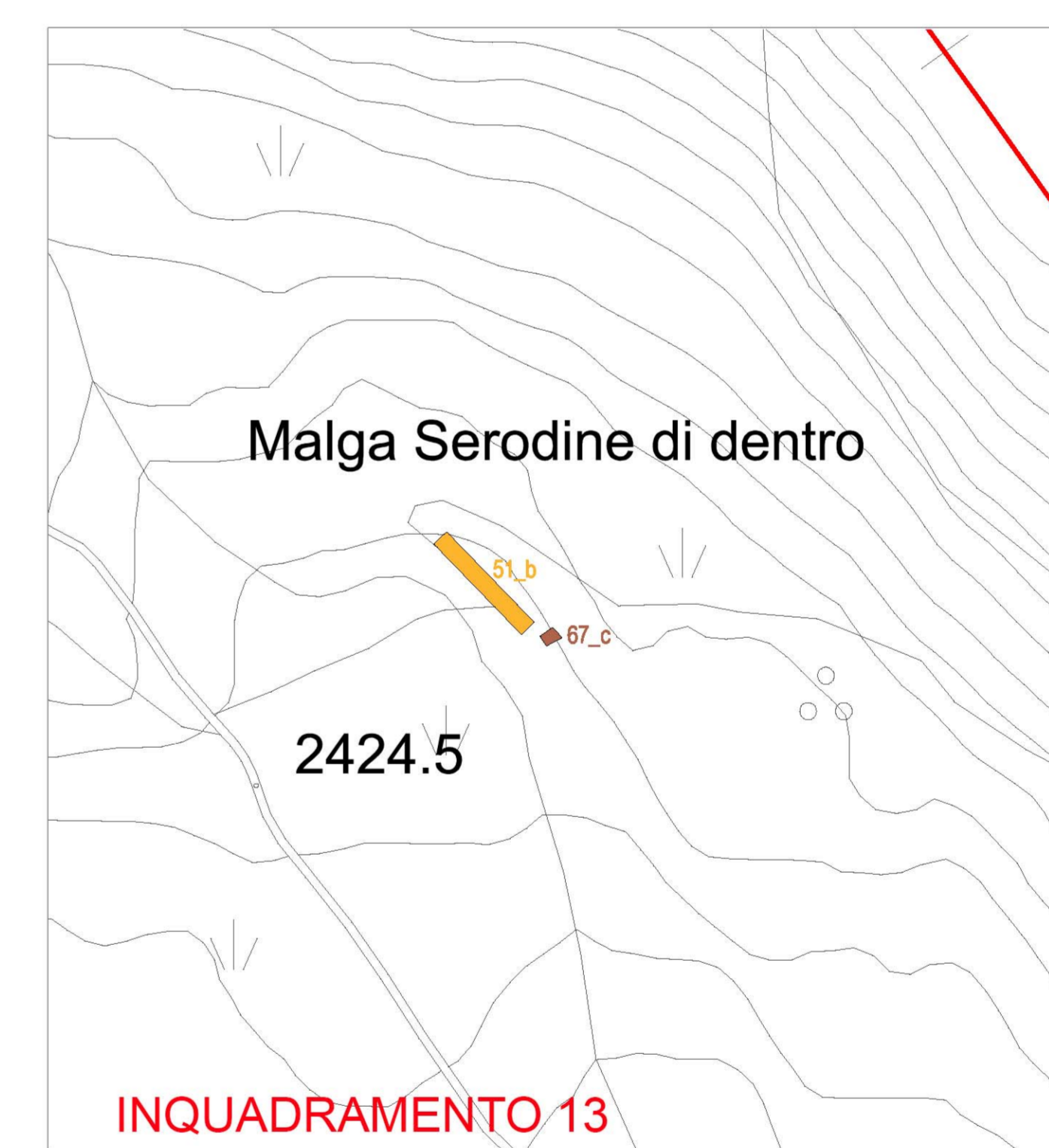
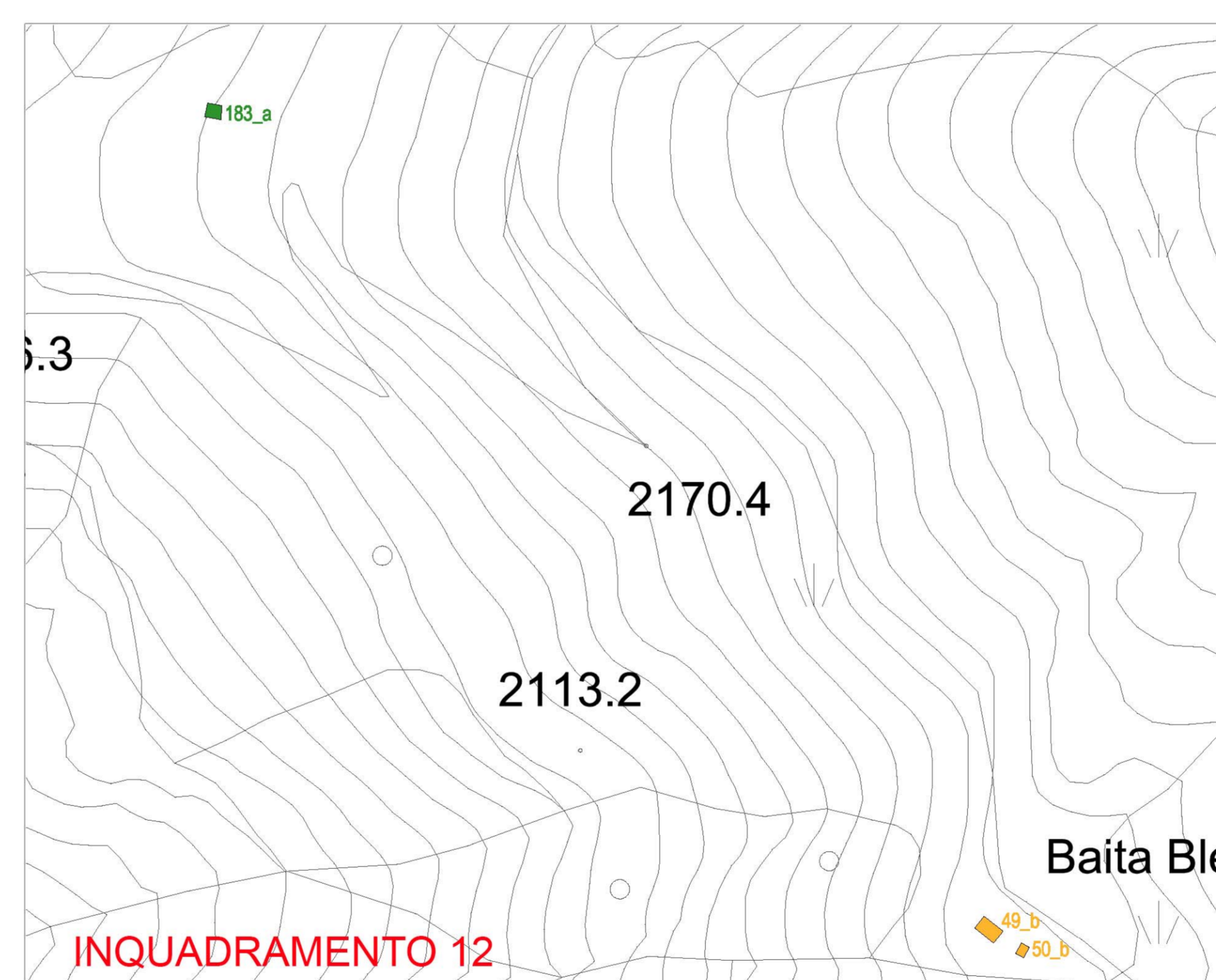
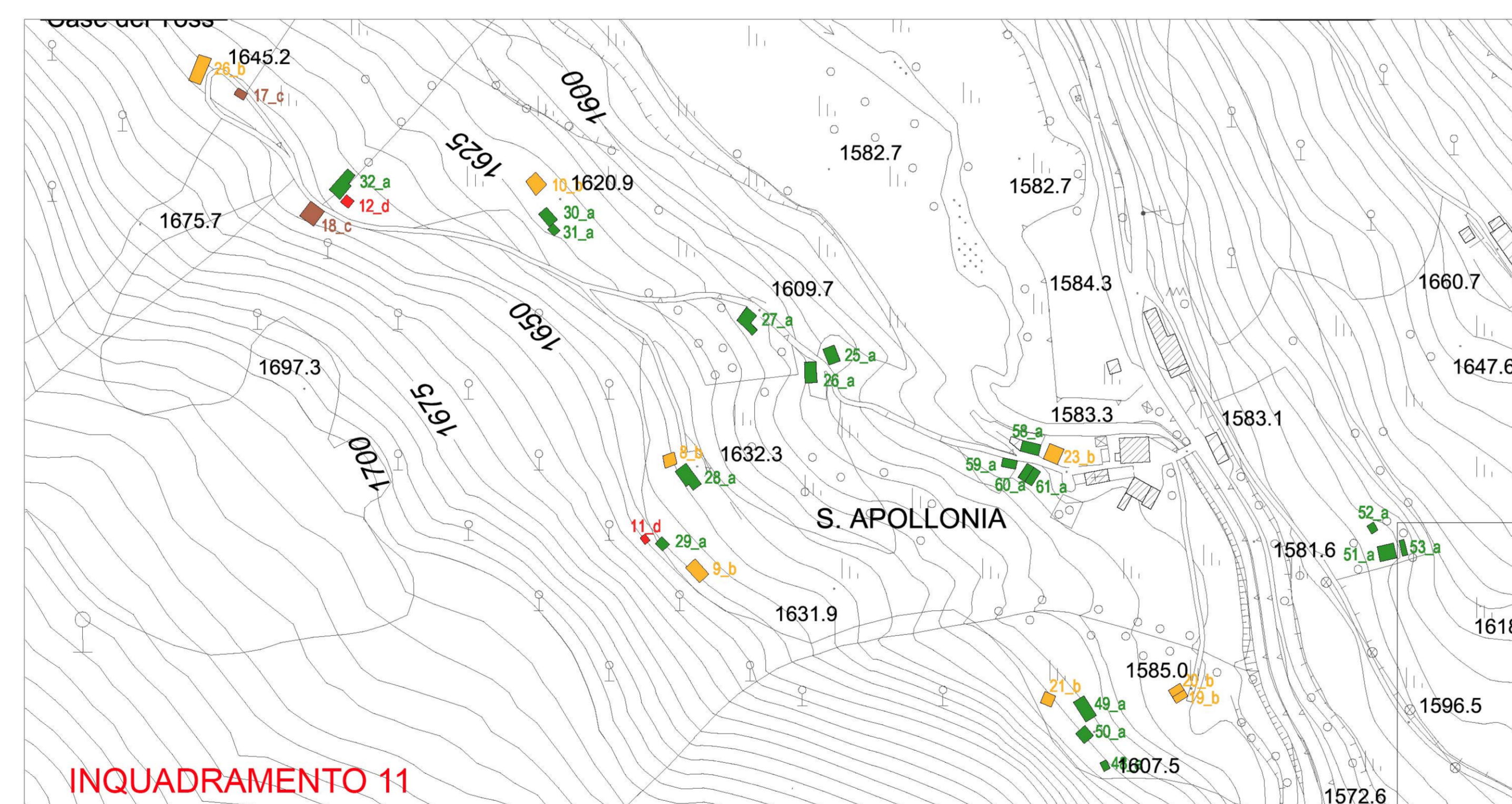
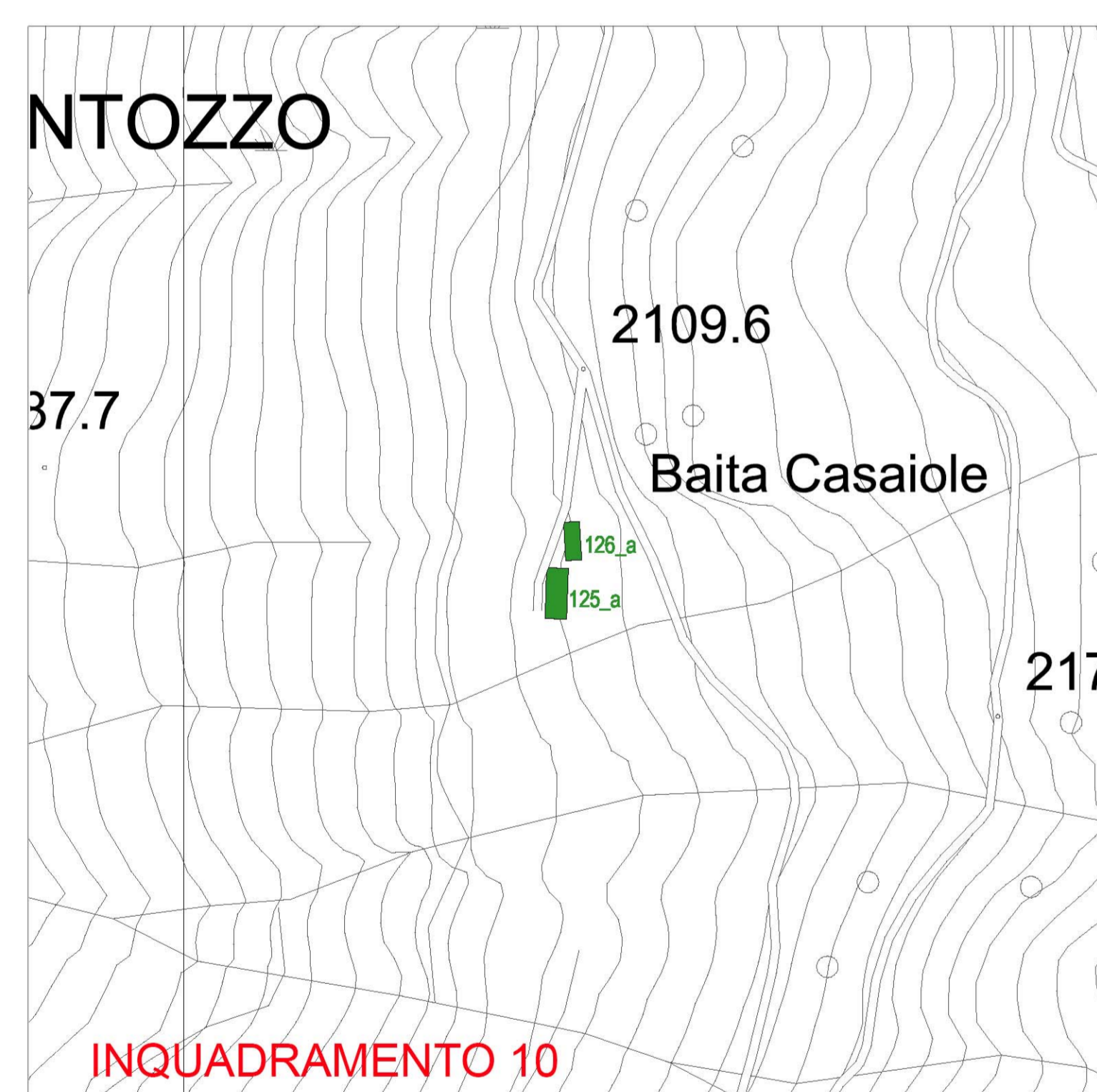
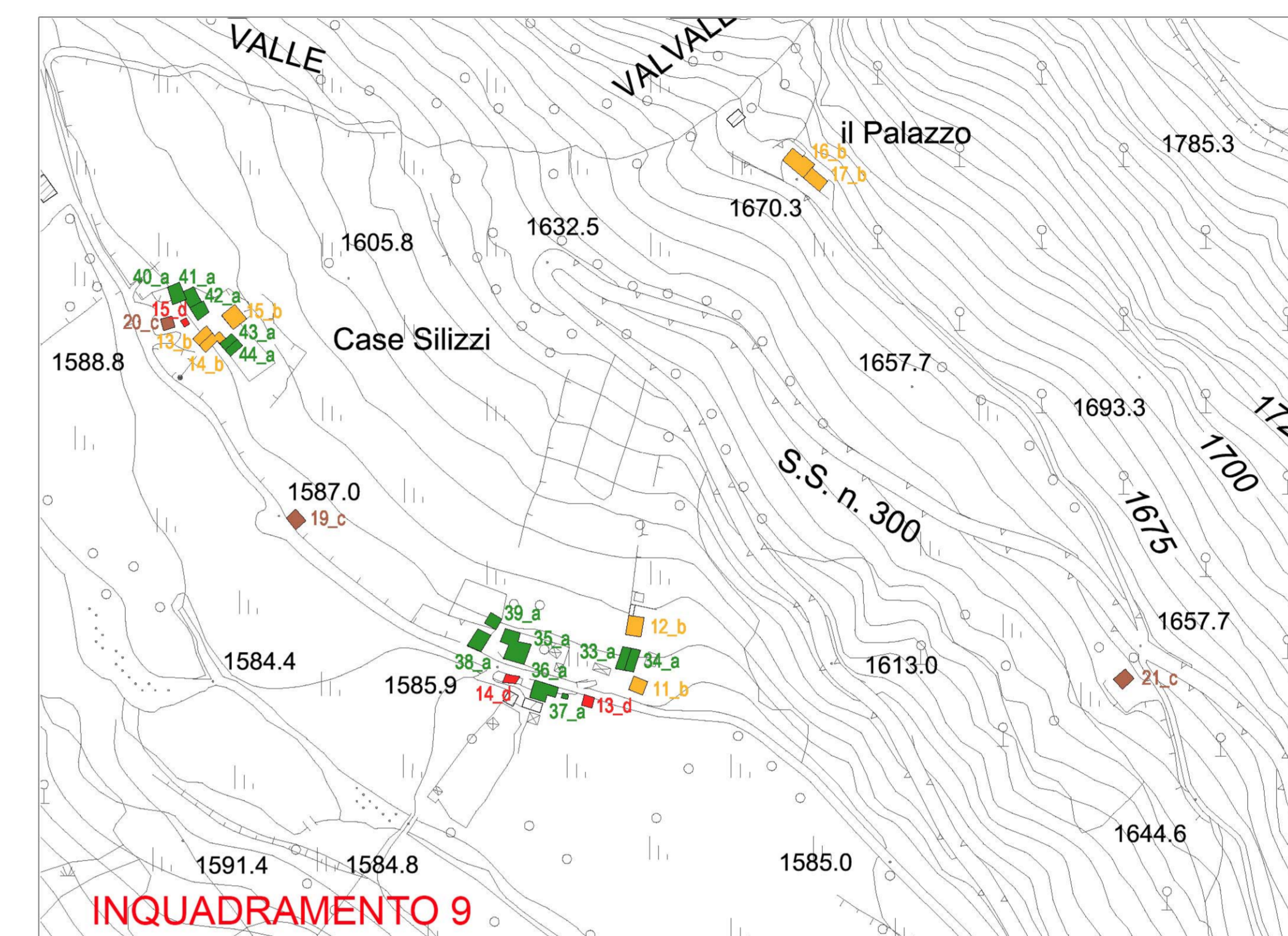
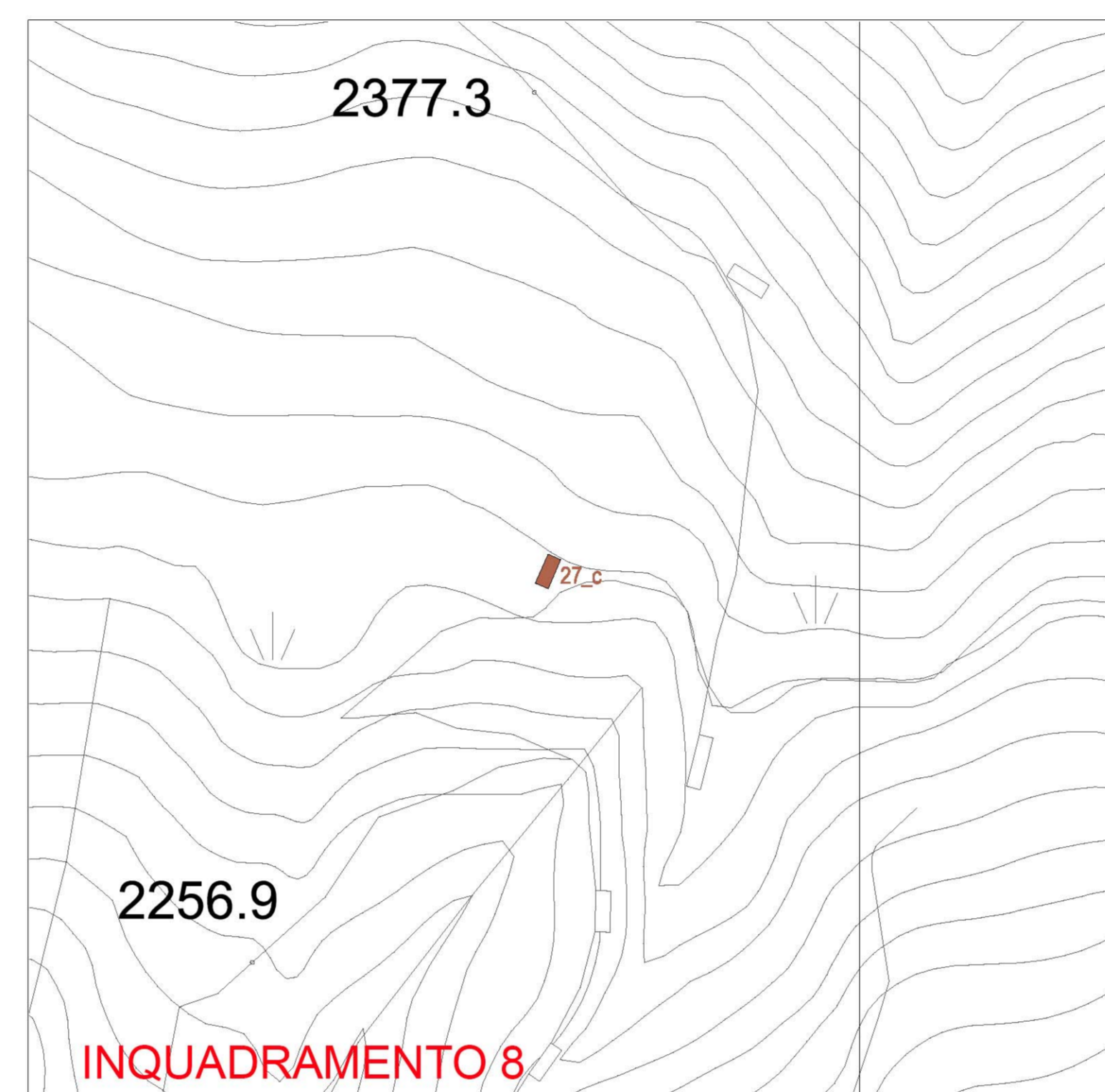
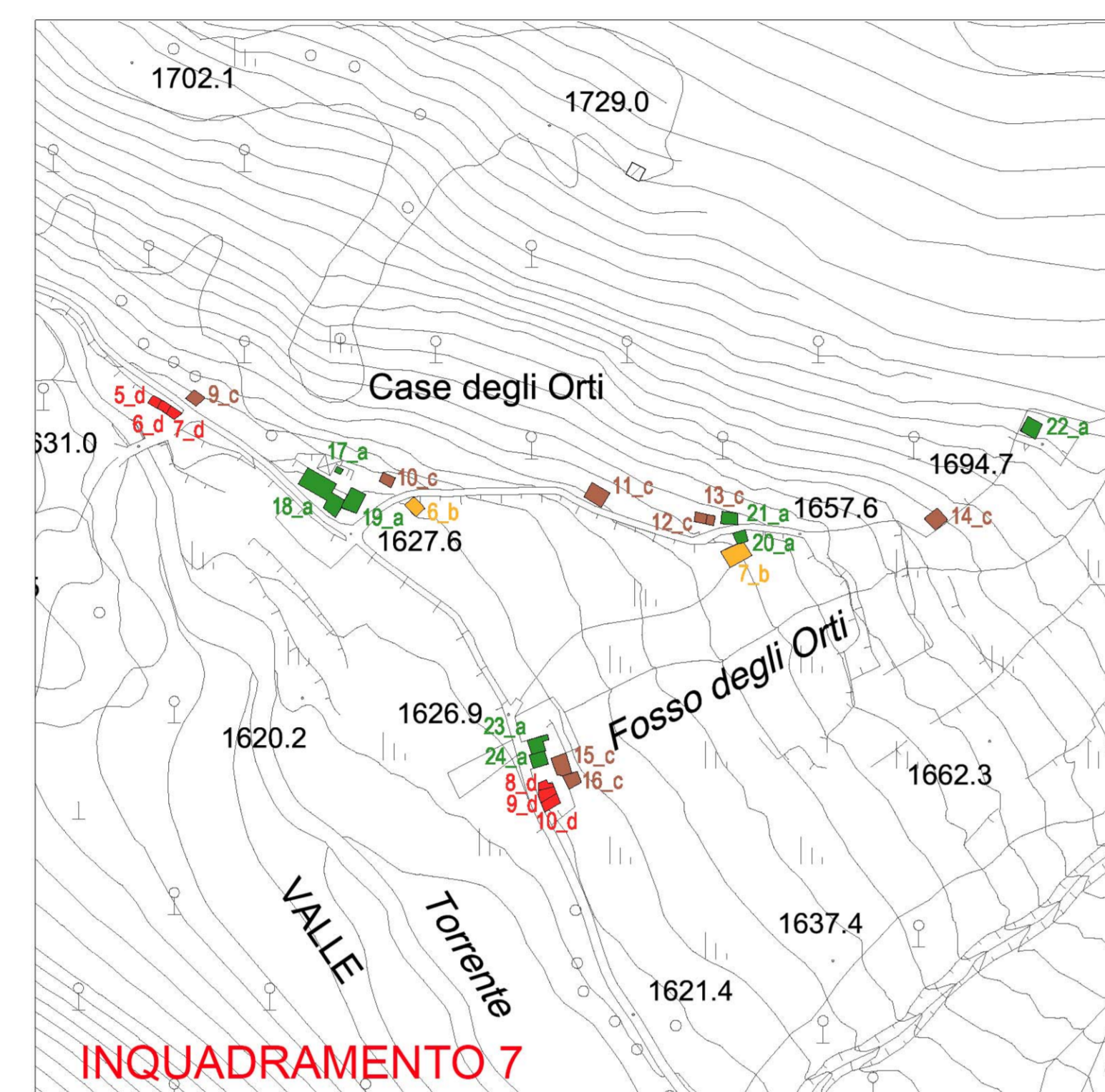
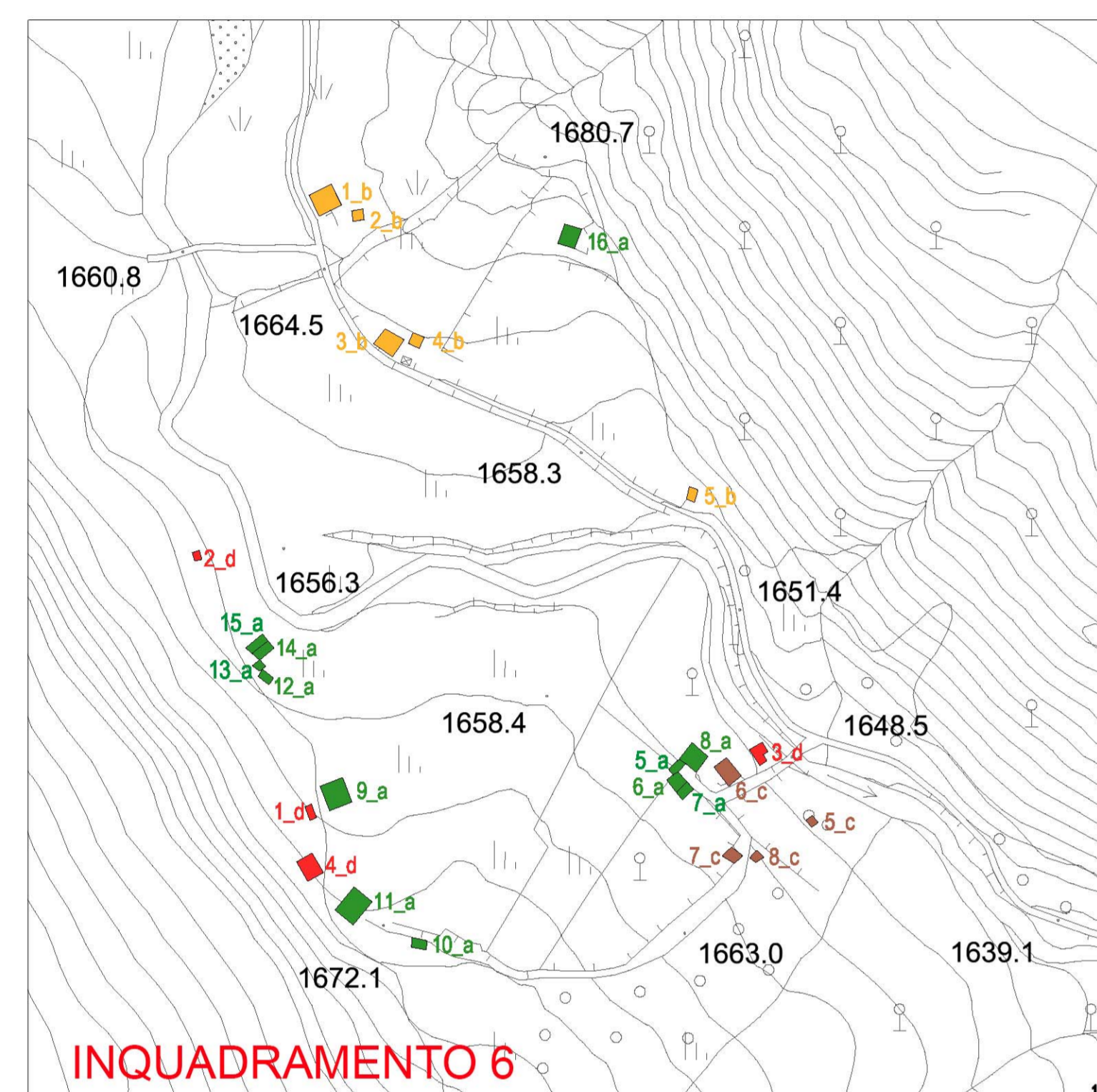


LEGENDA

- Confine comunale
- Edificio già ristrutturato
- Edificio da ristrutturare
- Ruderi ricostruibili
- Ruderi non ricostruibili



PIANO DI GOVERNO DEL TERRITORIO

PIANO DELLE REGOLE

Aurilia Sandrini - Sindaco
 dott.ssa Laura Cortesi - Segretario comunale
 Progettisti:
 arch. Giovanni Cignognetti - Capogruppo
 arch. Alessandro Andreatti
 arch. Antonio Rubagotti
 arch. Rossella Cervelli

collaboratori:
 arch. Raffaella Cambiasi - arch. Fabio Facchetti, arch. Valentinia Fiorinardi
 arch. Lucio Maselli - geom. Oscar Fiorini - Matteo Fiorini - Nicola Geronzi
 LUIGI CASATI - grafico

Nuclei di antica formazione e edifici storici in ambito extraurbano LOCALIZZAZIONE DEGLI EDIFICI RURALI MONTANI

base: ADICIONI
 scala: 1:2.000
 data: Novembre 2014
 aggiornamenti:

R.b.06.num

Studio associato arch. Giovanni Cignognetti - arch. Michela Piccardi - Ing. Clara Vitale - Loreda d'Elia (RRL)
 località San Polo - tel. Fax. 030-9913007 - e-mail studio@cpv.it